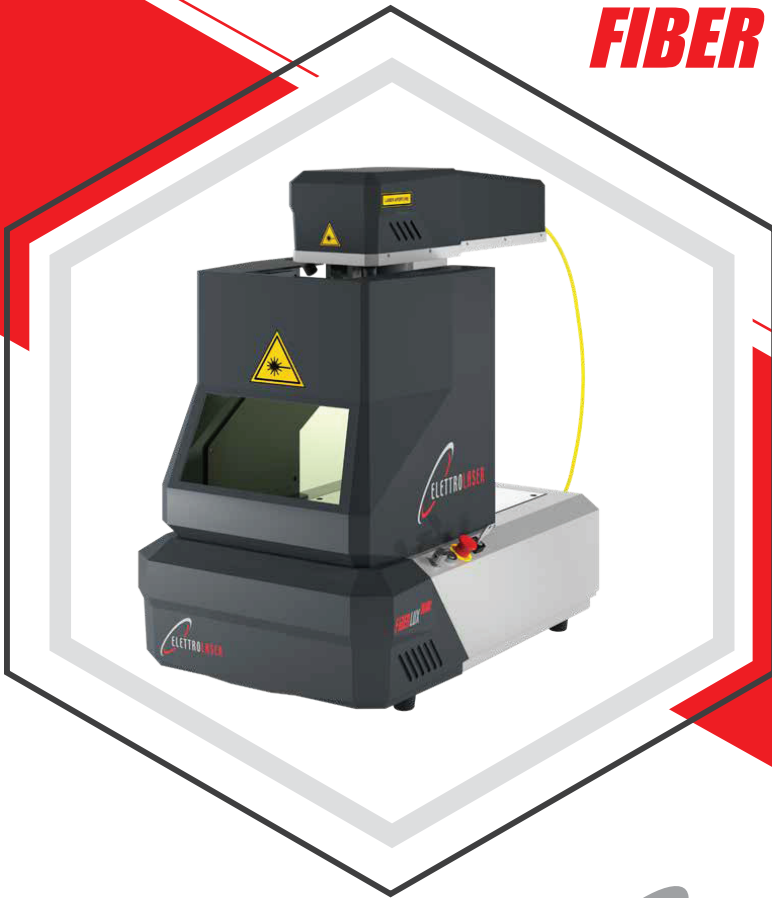


FIBER LUX NANO



freeform
FABRICATION

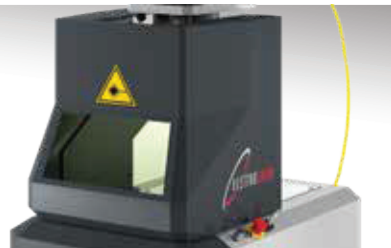
ELETTROLASER

• www.freeformfabrication.co.uk
• 01438-900190 / +44-1438-900190
• mail@freeformfabrication.co.uk

- Pulse fiber laser engraver
- Manual 2-axis operation
- Small size
- User-friendly software
- 3 years warranty



Z-AXIS MANUAL ADJUSTMENT



REMOVABLE PROTECTION COVER

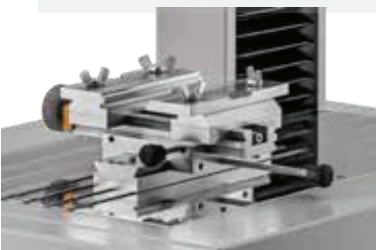
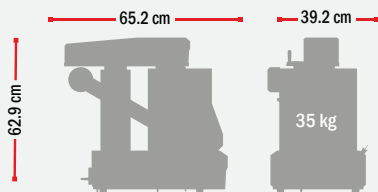
This 'mini' model by ElettroLaser was created based on the technology of the robust **FiberLUX** series with a view to offering a high quality laser engraver at an accessible price. It is also equipped with a laser source in ytterbium-doped fiber optics for excellent efficiency. It is a machine with low environmental impact and low maintenance. The machine is small, with a fully accessible working chamber.

An output marking power of 20W and 30W. **FiberLUX** Nano is supplied complete with software capable of importing files from the most well-known design programs.

It has an optional high-precision rotation axis to mark rings and bangles and an optional clamp accessory for securing pieces during the engraving process.

	FIBERLUX NANO 20	FIBERLUX NANO 30
OUTPUT POWER	20 w	30 w
WAVE LENGTH	1064 nm	
M2	< 1.8	
POWER SUPPLY	230V 50/60Hz opt. 110V on request	
ABSORBED POWER	250 w	350 w
WORKING SPACE DIMENSION (LXDXH)	250x250x310 mm	
WEIGHT	35 kg	35 kg
FOCAL 100: MARKING AREA / SPOT	60x60 / 16 um	
FOCAL 160: MARKING AREA / SPOT	100x100 / 26 um	
SPEED OF GALVO HEAD	5000 mm/s	
MAX PULSE ENERGY	up to 1 mJ	
MAX FREQUENCY	60 KHz	
COOLING SYSTEM	air cooled	
PULSE DURATION	100 ns at 20kHz	
LASER CLASS	IV	

DIMENSIONS



EASY ACCESS TO THE WORKING SPACE

OPERATING KEYS ON MACHINE

EASY I/O ACCESS